

M2M take 2

Mount-Maketu/Maketu-Mount/Mount-Mount



Venue: Pilot Bay, Mount Maunganui

Distance: 32km Iron

Type: W6

Divisions: Open Men, Open Women

Cost: \$300 per team

Event Schedule: Saturday 7th November 2020

8:00am Registration

9:00am Race briefing

11:00am Race Start Women

11:15am Race Start Men

3:00pm Food from Turkish Delight

Spot Prize:

Each team will be in the draw to win a set of six Tuakana Custom Paddles

Tuakana Customs



How to enter:

Your club Rep can enter all waka ama entries online.

Once entry is in please make Payment to:

Moore-morial event

06-0266-0143738-00

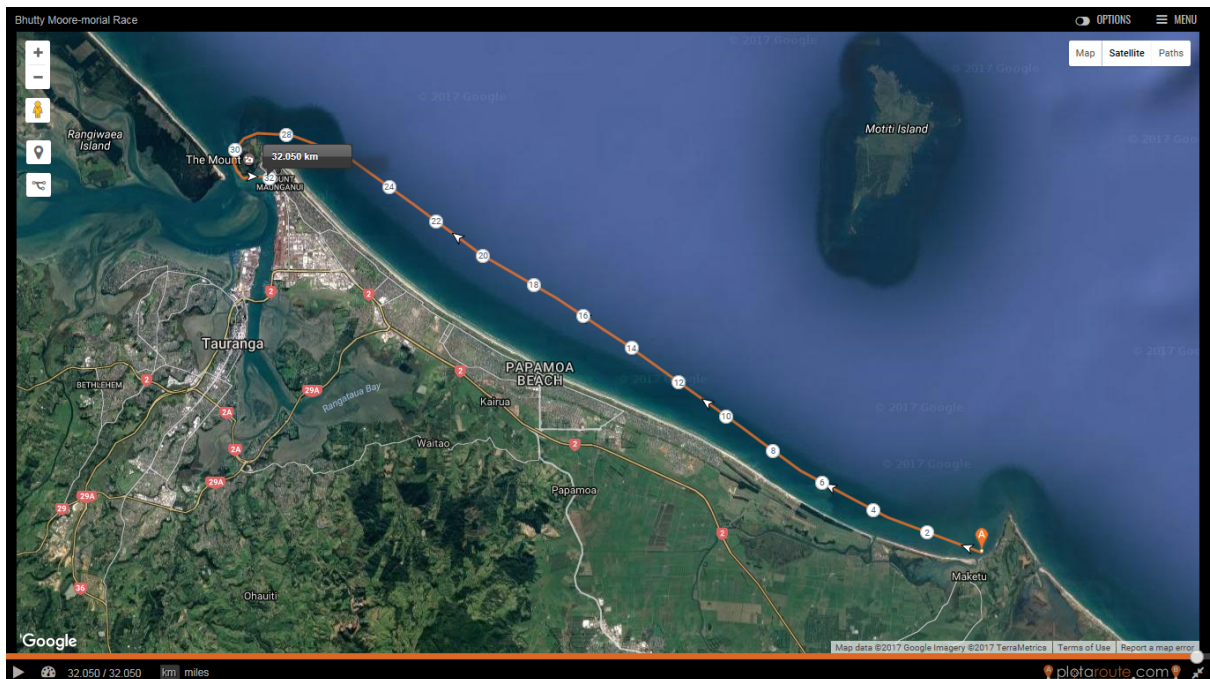
Please use your team name, club as reference.

What's up for grabs for you team if you enter:

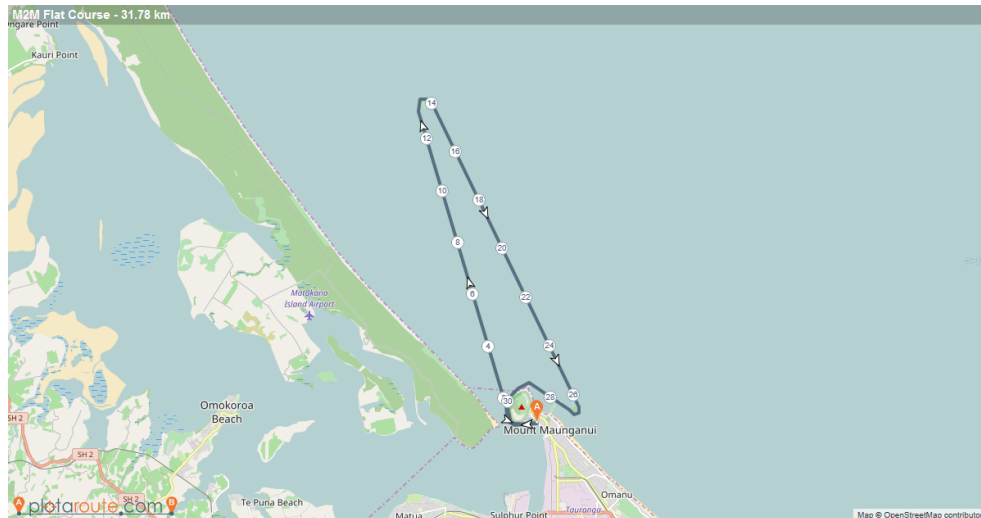
Sponsored By Tuakana Customs



Race Course: Mount 2 Maketu



Back up Race Course: 32km



High Tide: 09:24am

Low Tide: 15:40pm

Compulsory Equipment:

The following equipment must be carried by all waka and will be checked at gear check

- 1 life jacket per paddler (must fit correctly)
- 2 bailers W6,
- 2 Spare paddle W6
- 25m Tow rope W6 attached ready for towing
- Spray skirt
- Cell phone in waterproof bag or VHF Radio
- Flare

Race Course:

The race course will be decided on Friday the 22nd and all teams will be contacted. If the race start will be at maketu. Then race registration and briefing will also be from maketu.

Entrants:

The race is limited to 20 entries. First in first serve and teams with no proven history will need to provide sufficient results to prove their capability.

Bad weather:

In the case of bad weather making it too dangerous to paddle on the open ocean during the set race day and back up day. Then the race will be moved to the shelter of the harbour from Pilot bay.